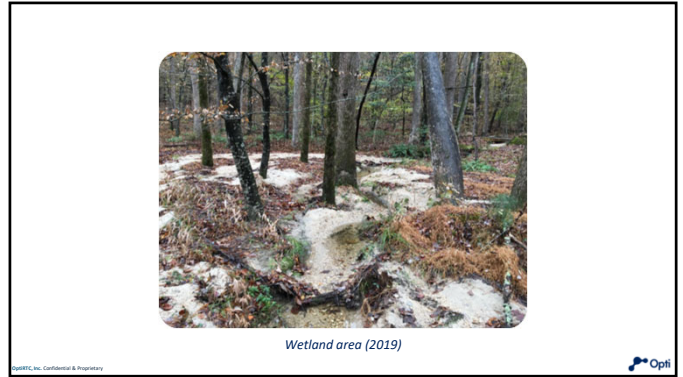
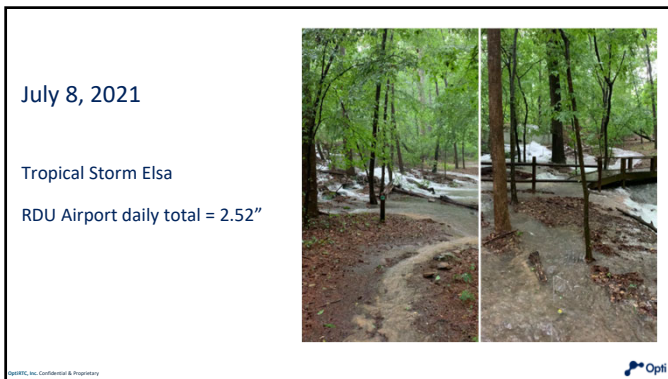


5



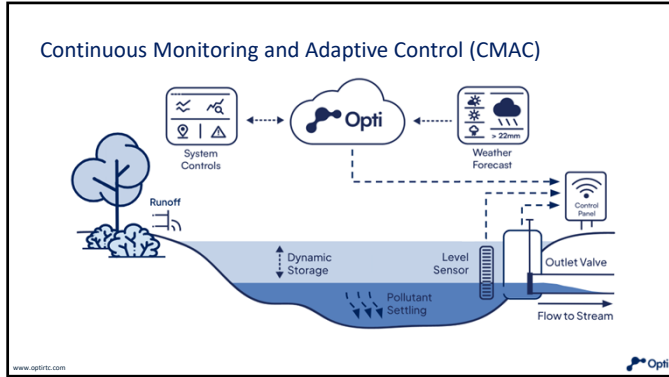
6



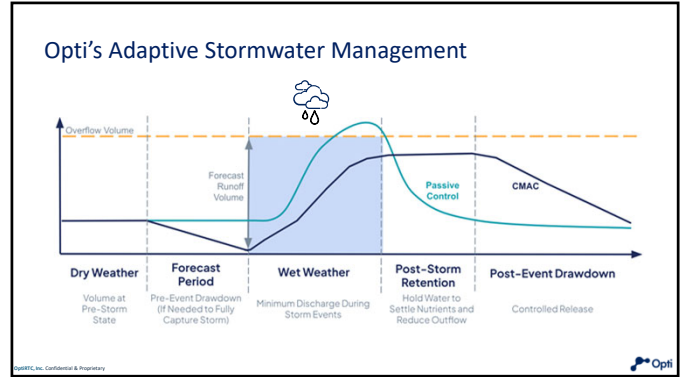
7



8



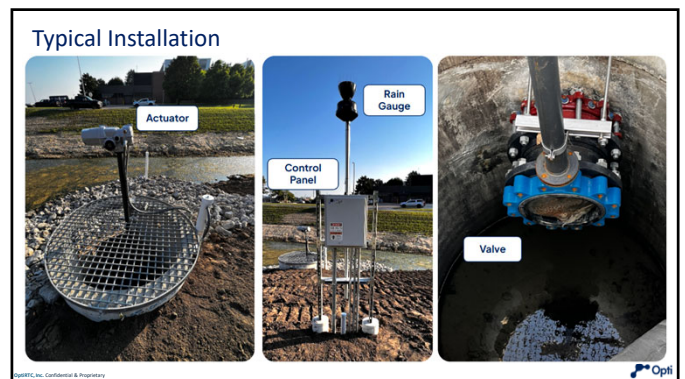
13



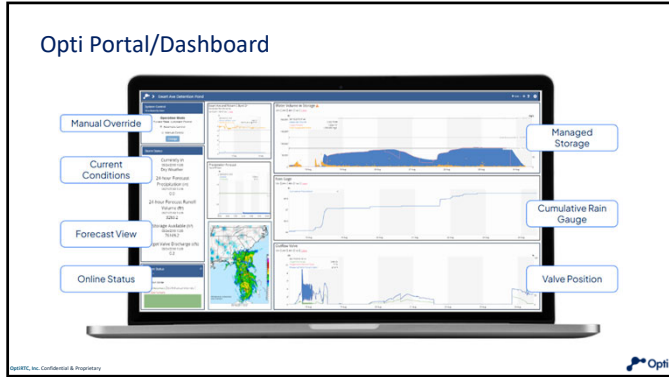
14



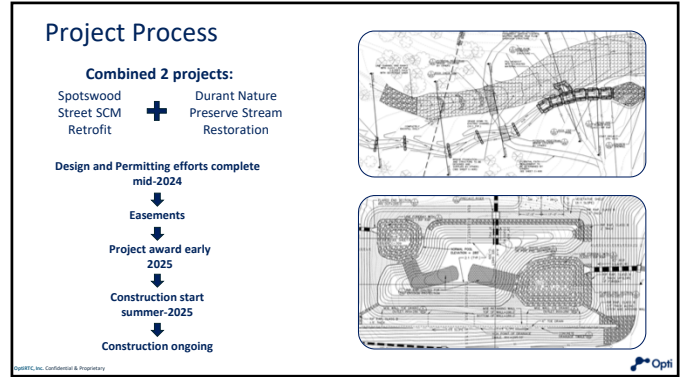
15



16



17



18

Construction

- Approximately 75% complete to date
- **Challenges**
 - Underground conditions
 - MSE Wall
 - Pedestrian Bridge
- **Opti System to be installed in July**
 - Onboarding and calibration efforts to follow

©2024 Opti, Inc. Confidential & Proprietary

19

Construction

©2024 Opti, Inc. Confidential & Proprietary

20

Restoring Lower Durant Lake: Implementing CMAC Technology for Flood Mitigation and Nutrient Recuction in Raleigh, NC

Opti
in collaboration with Raleigh Stormwater

Kyle Bucher
Senior Engineer | City of Raleigh
kyle.bucher@raleighnc.gov

Amy Farinelli
Stormwater Engineer | City of Raleigh
Amy.Farinelli@raleighnc.gov

Kathy Gee, PE, Ph.D.
Director of Regulatory Affairs & Alliances
kdgee@optirtc.com

Thank you for your time!

21

Security, Reliability, & Redundancy

- Cloud Based**
 - Alarms
 - Remote Manual Control
 - Internationally Certified Data Centers
 - Product Release Cycles
 - Third-Party Security Audit
- Mechanical**
 - Battery Backups
 - Local Fail-Safe Logic
 - On-Site Manual Control
- Civil Design**
 - Passive Overflow
 - Downstream Condition Assessment

Opti, Inc. Confidential & Proprietary

22