

IN THIS ISSUE

- PRESIDENT'S MESSAGE
- UPCOMING EVENTS
- IN THE SPOTLIGHT
- RESOURCE SPOTLIGHT
 - Click, Listen & Learn
- DIVISION NEWS
 - APWA-NC Leadership and Management Division: New I-485 Express Toll Lanes in Charlotte, NC
 - APWA-NC Stormwater Management Division: 2025 Stormwater Professional of the Year: A Dedicated Leader
 - APWA-NC Facilities and Grounds Division: A Facility Manager's Guide to Roof Replacement
- YP SPLASH
 - Spotlight: Brie Saur & Marissa Houston
- CONGRATULATIONS
 - Celebrating Our 2026 APWA-NC Scholarship Winners!
 - Congratulations to the NC Rodeo Winners!
- WELCOME NEW MEMBERS

President's Message



Greetings APWA-NC Members,

As we look around our communities, the impact of Public Works is everywhere. It has often been said that nearly every decision a municipality makes touches Public Works in some way. From ensuring clean and safe drinking water, to maintaining public facilities for residents to enjoy, to delivering reliable solid waste services and supporting safe transportation systems—our work is both essential and far-reaching.

As we begin a new month, I encourage you to take a moment to recognize the “fingerprints” of Public Works in your community. They are all around us, often behind the scenes, quietly supporting the quality of life we sometimes take for granted.

I would also like to extend my sincere appreciation to all of our members for the time and dedication you give in service to one another. Whether you are planning a conference, volunteering on a committee, or providing financial support to the Chapter, your contributions are what make our organization strong. It truly takes all of us working together to sustain the outstanding APWA Chapter that North Carolina is known for.

Finally, as we look ahead to National Public Works Week, I encourage you to take pride in and celebrate the vital work you do each day. Public Works is truly rooted in service and powered by community.

Forrest Jones

2026 APWA-NC Chapter President

UPCOMING EVENTS

Stormwater in the Future: Real-Time Controls, Sensors, and Automation

June 8, 2026

Stormwater in the Future will be held in Greensboro, NC June 8, 2026. This year's educational session is built around the tools and workflows that are rapidly changing how stormwater systems are operated, monitored, and optimized. Expect a practical, implementation-focused agenda featuring real-world applications of flood warning systems, dam monitoring, forecast-driven pond operations, and municipal implementation pathways. Registration information will be available at a later date.



Stormwater in the Future

Real-Time Controls, Sensors, and Automation

Mark your calendars! Join us in **Greensboro, NC**, on **June 8, 2026**, for an insightful educational session focused on the latest in stormwater technology. Explore cutting-edge topics such as:

- Raleigh's Flood Warning System
- Charlotte Dam Monitoring
- Forecast-Driven Pond Operations
- Spottswood Street Pond Retrofit (Opti)
- Cary Implementation Path (Gradient)
- FINS + Sensor Networks (CM Storm Water)

June 8, 2026 | Greensboro, NC | 3 PDHs and ample networking opportunities will be available.

Leadership and Management Division Conference

July 22 – July 24, 2026

The Leadership and Management Division Conference will be held in Winston-Salem at the Winston-Salem Marriott July 22 – July 24, 2026.

[Partner Registration](#)

Solid Waste Division Conference

July 27 – July 29, 2026

The Solid Waste Division Conference is a captivating two-and-a-half day event held in Cherokee July 27 – July 29, 2026. This conference is a rich source of insights into the latest trends in solid waste management, updates from the North Carolina Department of Environmental Quality (NC DEQ) on upcoming legislation and regulatory changes, and abundant networking opportunities with fellow solid waste professionals during social events and leisure activities.

[Attendee Registration](#)

[Partner Registration](#)

APWA National Public Works Expo

August 30 – September 2, 2026

PWX will be held in Houston, TX. PWX provides a first-class multi-modal learning experience designed for professionals at all levels and across the entire spectrum of public works. Come prepared to see, hear, touch, and discuss in a variety of traditional and interactive sessions, seminars, workshops, and networking opportunities. Attendees can also spend time on North America's largest exhibit floor for public works equipment and services—we've carved out generous portions of non-compete time, so you don't miss any sessions. Kick tires, talk about technology, or get the scoop on new products.

Stormwater Management Division Conference

September 13 – September 15, 2026

The Stormwater Management Division Conference will be held in Winston-Salem September 13 – September 15, 2026. More information will be available at a later date.

Combined Equipment Services and Streets Division Conference

October 28 – October 30, 2026

The Combined Equipment Services and Streets Division Conference will be held in Cherokee October 28 – October 30, 2026. More information will be available at a later date.

INFRASI

**Operational Visibility
for Public Works**

Managed IoT services for
waste operations, facility
health, and fleet assets.

Sensors **Connectivity** **CMMS
Integration**

REDUCE DOWNTIME. IMPROVE SERVICE LEVELS. CONTROL COSTS.

Managed IoT for Public Infrastructure • infrasi.com

IN THE SPOTLIGHT

FACILITIES AND GROUNDS DIVISION

The Facilities and Grounds Division organizes to support the professional growth of men and women whose responsibilities include the operation, management, or maintenance of public buildings, grounds, or parks. Members have access to a support network, fellowship, and resources for exchanging and developing ideas, information, skills, knowledge, and technologies. The Facilities and Ground Division hosts two events annually: the Spring Conference and the Fall Workshop and Social Gathering.

The Facilities and Grounds Division Conference is being held at the Beaufort Hotel in Beaufort, NC May 6 - May 8, 2026. The conference is open for registration.

[Attendee Registration](#)

[Partner Registration](#)



Steve Gearren

Facilities and Grounds Division President

Director of Public Works, *Village of Clemmons*

What is / was your APWA journey?

My APWA journey started with a fleet tour of the city of Greensboro. I saw an email about it and thought it would be a good chance to see how other Municipalities did things. Well as it turned out the tour was being put on by the fleet board and I got an opportunity to meet some great people. Later I went to the annual conference and some of the people I had met welcomed me, introduced me around and later asked me to join. When I spoke to my boss about it, he highly encouraged me to participate as a chance to learn and meet more people. This was important. Knowing that I had support from within allowed me to be able to spend time away from the office. So, I joined the board. Now after haven been a past president and have served on many other boards and committees, I currently serve on the Buildings and Grounds board and Membership committee. I do not know what role I will be in next, but I am looking forward to continued growth with our chapter.

How has APWA impacted your career and / or life?

It's hard to believe that attending a small fleet tour could have such a drastic effect on my career and personal life. The people I have met along the way have given me so many resources and ideas that have helped me progress from an Equipment Operator to Public Works Director. APWA is all about the people. This group has not only become the most comprehensive data base of knowledge and ideas, but lifelong friends. Today attending a conference is like going to a family reunion. We talk about all our adventures, both good and bad, while continuing to look forward to making new ones.

Any words of advice for people who are hesitant about getting involved in APWA beyond just a membership?

Don't wait, just do it. The amount of effort you will put in going to a conference or serving on a board or committee will be repayed to you 10-fold. When you attend the conference make sure to attend the social events, this is where the contacts are made. Some of the best ideas and information I ever received came from standing around with others just talking about what we do and how we do it. Everyone I have ever met in this organization is more than willing to share their experiences both good and bad. How much better can it be than to learn from someone else's mistakes without having to actually go through them.

NATIONAL PUBLIC WORKS WEEK COMMITTEE

National Public Works Week (or NPWW) is a great time to celebrate the amazing employees in your department and to educate citizens of your town or city about the important work they do. This year's theme is "Rooted in Service, Powered by Community". Across North Carolina municipalities will be making proclamations to celebrate NPWW and your APWA NC NPWW chair will be writing to Governor Stein to request he recognize this important week for the entire state. Visit our [NPWW page](#) to see declarations of recognition for past years and photos from great events!

But this section is really to highlight a resource from APWA National, and they deliver here! For National Public Works Week, the National page hosts a poster you can purchase or download and print in-house, coloring pages for school or youth events, and logos of this year's theme. They also have how to guides for different events like Employee Appreciation, a Public Works Exhibit, Outreach to Schools and more. We're even provided a social media toolkit, so download yours' today!



NPWW Events



Logan Small

National Public Works Week Committee Co-Chair

Assistant Director – *General Services Department, City of Durham*

Why is public works important to you?

Public works is important to me because it quietly keeps our communities running every day and touches people's lives in ways they may not always see. I take pride in being part of a profession that focuses on service, solves real problems, and makes our communities great places to live, work, and play.

What is/was your APWA journey?

My introduction to APWA began in 2019 when I attended PWX in Seattle and had the opportunity to learn from others in the profession. Over time, I became more involved with APWA-NC and eventually joined the board, currently serving on the National Public Works Week Committee and as a Director for the Facilities & Grounds Division. Being involved with planning and supporting events has been a great way to give back and helping create spaces where we can connect. I am now leading our department as we pursue APWA accreditation.

What is your favorite APWA event to attend and why?

The APWA-NC Facilities & Grounds Conference is one of my favorite events. It brings together professionals who focus on the built environment and provides an opportunity to discuss real challenges and practical solutions. It's also a great balance of learning, networking, and reconnecting with colleagues from across the state.



Chris Trull

National Public Works Week Committee Co-Chair
General Services/Fleet Management – *City of Charlotte*

Why is public works important to you?

Public Works is the behind-the-scenes work that keeps a community moving forward. The thought of being able to be part of services that bring water supply, emergency management, trash pickup and sewer services to citizen’s daily lives is satisfying work.

What is your favorite APWA event to attend and why?

Combined Equipment Services and Streets Division Conference is an annual event I try to attend every year due to the industry experts I get to talk to and learn from is very valuable.

Any words of advice for people who are hesitant about getting involved in APWA beyond just a membership?

Don’t hesitate, it’s worth the time and investment! I have met great colleagues and friends during my time in APWA that I call on for help when needed.

CHAPTER PARTNERS COMMITTEE

The Chapter Partners Committee is responsible for outreach and coordination with our Chapter Partners. The support of our partners allows the Chapter to fulfill its mission of promoting professional excellence and public understanding through education, advocacy, and the exchange of knowledge. For more information on chapter partners and how to register, take a look at our [partner flyer](#).

Our Chapter Partner Committee also coordinates vendor demo opportunities. Any current APWA member or registered chapter partner is eligible for a vendor demo. For more information, visit our [vendor demo webpage](#).

Thank you to our current Chapter Partners!



Heather Freeman

Chapter Partners Committee Co-Chair
Staff Engineer – *City of Concord*

Why is public works important to you?

Public Works is important to me because it is the backbone of a community. So much of what we do happens behind the scenes, but it directly impacts people’s lives. I really value being part of work that keeps things running safely and reliably for the public.

How did you decide to join APWA?

I joined APWA because I wanted to learn more and connect with others. Public works can be specialized, and it helps to have a network where you can share ideas, ask questions and see how other agencies/companies are handling similar challenges.

What is your favorite APWA resource and why?

My favorite APWA resources are the stormwater training sessions and peer networking opportunities. With over 24 years in stormwater, I value the practical, real-world solutions APWA provides. I consistently come away with useful ideas, regulatory insights, and professional contacts that strengthen our program.

Any words of advice for people who are hesitant about getting involved in APWA beyond just a membership?

If you're hesitant, start small but start somewhere. APWA involvement gives you access to a network of professionals, practical resources, and opportunities to make a real impact in public works — far beyond what a membership alone provides.

RESOURCE SPOTLIGHT

Click, Listen & Learn

APWA's Click, Listen & Learn (CLL) webinars are a valuable tool for your chapter or organization's education programming. CLLs are interactive educational programs led by top experts in the field who share innovative ideas, proven methods, and emerging technologies in a fast-paced one-hour time frame. Programs can be introductory, applied, or advanced-level education. These programs align with APWA's monthly Focus On Public Works topics.

[See page 9 to learn more.](#)



CLICK, LISTEN & LEARN (CLL) WEBINARS

TOOLBOX 

APWA's Click, Listen & Learn (CLL) webinars are a valuable tool for your chapter or organization's education programming.

What is a Click, Listen & Learn?

Click, Listen & Learn webinars (CLLs) are interactive educational programs led by top experts in the field who share innovative ideas, proven methods, and emerging technologies in a fast-paced one-hour time frame. Programs can be introductory, applied, or advanced-level education. These programs align with APWA's monthly Focus On Public Works topics.

How Can Your Chapter or Organization Use CLL Programming?

CLL webinars offer a simple, ready-to-use option for "Lunch and Learn" sessions or chapter meetings. APWA supplies a one-hour program, handouts, and a Group Discussion Guide. Your organization or chapter only needs to provide a meeting space, a volunteer to facilitate the discussion, and access to stream the program. Chapters may register for live sessions or use previously recorded programs available in the Resource Center. Focusing on live sessions allows chapters and organizations to align education with the monthly Focus On topics. Additional resources and education related to the monthly topic can be found on APWA's [Focus On page](#).

Benefits of Using CLL Programming:

- **Revenue Generation:** Chapters may charge a modest registration fee, creating a simple, low-cost revenue stream.
- **Increased Member Engagement:** Regular "Lunch and Learn" sessions encourage ongoing participation and help members stay connected.
- **Opportunity for New Members:** Timely or high-interest topics can attract nonmembers, offering a natural pathway to introduce them to the chapter and potentially grow membership.
- **Value for Partner Organizations:** Organizations hosting a Lunch and Learn can offer structured professional development to their staff with minimal preparation, demonstrating a commitment to employee growth and industry best practices.

Steps for Hosting a Lunch and Learn using a CLL

1. Find a volunteer to organize the Lunch and Learn. The time commitment is approximately two to two and a half hours total, including program time.
2. Select an appropriate program for your audience. Ensure that the proficiency level matches your audience. Upcoming programs can be found on our [events page](#), or previously recorded programs can be found in the [Resource Center](#).
3. Secure a space and ensure you have proper technology to stream the program.
4. Send an invite to your group.
5. On the day of the program, double-check your technology and send out materials to participants. Handouts for previously recorded programs can be found in the Resource Center. If you are using a live CLL, you will not have access to materials until the program starts.
6. Following the program, use the Discussion Guide to extend the learning. It is recommended to allow approximately 30 minutes for discussion.

Frequently Asked Questions (FAQ)

1. What is the cost of accessing a CLL webinar?
Live programs are free to members and \$99 for nonmembers. Recorded programs are only available to members and can be found in the Resource Center.
2. Who should facilitate the discussion?
A volunteer or staff member familiar with the topic or group dynamics is ideal. APWA provides a Discussion Guide to help facilitators lead meaningful conversations.
3. Are handouts available for the program?
Handouts for recorded CLLs are available in the Resource Center. Handouts for live programs become accessible once the program begins.

If you have any questions, please contact the APWA education team at education@apwa.org or (800) 848-2792 option 2.



DIVISION NEWS

APWA-NC Leadership and Management Division

New I-485 Express Toll Lanes in Charlotte, NC: The Latest Updates

Submitted by Mae Bryant, Director, APWA-NC Leadership and Management Division

The multi-agency design-build project delivering 17 miles of express lanes (one express lane in each direction) in the median of I-485 extending from I-77 to US-74 opened to the public on February 28, 2026. This project included direct connectors at Westinghouse Blvd and Johnston Rd, a new I-485 Weddington Rd Interchange, and modifications to the East John St. interchange.

The project team consisted of the general contractor, Blythe Construction, the lead designer, WSP along with other team members Progressive Design Group, Inc, DRMP, Terracon, Traffic Control Devices, Inc., TELICS, UCC, and others.

There was coordination between the Town of Matthews, City of Charlotte, NCDOT (NC Dept. of Transportation), NCTA (North Carolina Turnpike Authority), Utility Owners, Highway Patrol, and Emergency Services. The timeline of construction starting from award in September 2018 to completion and opening went through COVID impacts, multi-agency coordination strategies, traffic control strategies, and complexity of the design and construction of interchange improvements.

The toll lanes are all electronic tolling which allows the drivers to keep moving through the toll roads, bridges, etc., without having to stop and pay manually. The system collects the fees automatically. This type of system helps reduce traffic delays, is less expensive than the traditional toll booths, saves time and avoids stops.

Congratulations to everyone involved! A lot of hard work and collaboration to improve mobility throughout the Charlotte region.

DIVISION NEWS

APWA-NC Stormwater Management Division

2025 Stormwater Professional of the Year: A Dedicated Leader

Submitted by APWA-NC Stormwater Management Division

One of the highlights of the Stormwater Management Division (SMD) Annual Conference is recognizing a stormwater professional who stands out among their peers for exceptional leadership, innovation, and lasting contribution to the profession. Each year, the highest individual distinction from the SMD is the H. Rooney Malcom Stormwater Professional of the Year Award.

At the 2025 SMD Annual Conference, Billy Lee, Stormwater Operations Manager for the Town of Cary, was selected as the H. Rooney Malcom Stormwater Professional of the Year.

Billy's path to stormwater leadership is a rare blend of field know-how and engineering rigor. He earned a chemistry degree from Warren Wilson College in 1980, worked as a campus plumber, then went on to run his own plumbing business and earn his contractor's license in 1984. After returning to school, he completed both a Bachelor's and Master's in Engineering at NC State University by 1989.

Before joining the Town of Cary stormwater team, Billy spent nearly two decades in private consulting, including 18 years at WithersRavenel, where his experience spanned stormwater, groundwater, geospatial systems, water and sewer, floodplain management, dam safety, and more. That multidisciplinary perspective became a superpower when he joined the Town of Cary in 2010 and began shaping a modern, collaborative stormwater program.

Turning Silos Into a System

From day one at the Town, Billy invested significant time and energy to understand the people and processes behind Cary's program, then steadily shifted the organization from siloed operations toward a proactive, solutions-focused team that tackles challenges holistically.

One of Billy's most transformative contributions has been implementing an adaptive management framework that connects staff across departments (Parks and Recreation, Transportation, Planning, Public Works, Utilities) and includes external stakeholders such as consultants, residents, and researchers. These working groups are designed to solve real issues with open dialogue, creative solutions, and practical outcomes. This approach helped drive major policy change, including Cary's adoption of a 100-year stormwater detention ordinance.

Delivering Results with (and without) Resources

Billy's current work spans strategic planning, budgeting, and hands-on implementation, with a notable challenge: Cary's stormwater program is funded through the general fund, without a dedicated stormwater utility fee. In spite of what might seem a financial hurdle, he has leveraged internal and external partnerships to address legacy flooding, advance green stormwater infrastructure, and develop a stream sensor and rain gauge network. He also led the creation of Cary's first stormwater business plan, providing a roadmap for future resilience and innovation.

Billy's influence extends beyond Cary. He has served on the NC APWA Stormwater Board and the Wake County Water Partnership, where he chaired the Green Stormwater Infrastructure (GSI) subcommittee. He has worked collaboratively with others in the stormwater community to refine his approach to stormwater management and navigate hurdles as they arise.

Results You Can Measure; Leadership You Can Feel

Last spring, when Billy was nominated for this award, the submitted narrative summarized Billy's technical impact, but it also highlighted something harder to quantify: the culture he builds. Billy is a committed mentor who takes time to know teammates as people, creates a climate of trust, and exudes genuine pride in public service.

Colleagues describe his leadership style as equal parts mentoring and momentum, always pushing those around him toward deeper thinking and better decision-making. In short, Billy Lee represents the best of stormwater management: practical problem-solving, strong engineer, and a people-focused leader that makes teams better than the sum of their parts. For his innovation, collaboration, and dedication to the profession, SMD is proud to recognize Billy Lee with a prestigious award and to share a small part of his story in this newsletter.



Billy Lee (center) with Town of Cary stormwater colleagues following recognition as the H. Rooney Malcom Stormwater Professional of the Year.

A FACILITY MANAGER'S GUIDE TO ROOF REPLACEMENT

A Field Guide from The International Institute of Building Enclosure Consultants (IIBEC)

Submitted by APWA-NC Facilities and Grounds Division

INTRODUCTION

Roofs are one of the most critical components of a building's enclosure. They serve as the first line of defense against water intrusion and are typically the most exposed element of the building. Roofs must manage large volumes of rainwater; withstand significant thermal changes; resist wind loads from storms, hurricanes, tornados; and help regulate interior temperatures—all while performing reliably for 20 years or more. In many ways, the roof is the true workhorse of the building enclosure.

Why then does it seem that roofs often receive the least amount of attention when it comes to evaluating and designing a proper building enclosure system?

The US roofing market is a **\$25 billion industry,**

with approximately 70% of all roof products sold used in reroofing applications. This translates to approximately \$17 billion in roofing work on existing buildings each year. Far too often, design professionals are not engaged in roof replacement projects. If the design or construction of the roof replacement doesn't go as expected, the resulting litigation can cost tens if not hundreds of thousands of dollars and create continual headaches for the building owner, management team, and occupants due to a flawed roofing system.

If a designer is not engaged in the reroofing process, who then is responsible for the design of this building asset? Often the roofing contractor or roofing manufacturer, but at times the owner may (inadvertently and without knowledge) be the responsible party, thereby becoming the designer of record for the project. Owners need to understand if the roofing contractor or roofing manufacturer has the professional registrations, licenses, insurance, or credentials to properly serve in this role.



WHERE TO START

When an existing roof has reached the end of its design life, two general options for reroofing exist. The first option is to completely remove all of the existing roofing materials to expose the structural roof deck and install new materials; this process is known as a roof replacement. The second option is to leave the original roof in place and install a new system (membrane or membrane and insulation) over the existing one; this is known as a roof re-cover.

Deciding which of these approaches is right for a building can be a difficult process, driven by many factors. Both approaches require an evaluation of the existing conditions along with a basic understanding of the structure, material compatibility, accepted construction practices, and a general knowledge of the building codes. These considerations are necessary to properly design and install a new roof that meets the unique performance requirements for the project.

Determining a plan of action and identifying the right questions to ask frequently involves checking the building codes, the design and installation requirements. It also involves the current performance issues, as well as making informed cost considerations. Many different types of roofing products are available, and a nearly infinite number of building configurations and conditions exist. When it comes to reroofing, these decisions matter, and certainly one size does not fit all.



*Photo by Allysia C. Youngquist,
AIA, IIBEC, NCARB*

Engaging an independent consultant (Registered Roof Consultant, Architect or Engineer), is generally a prudent approach to beginning a roof replacement or re-cover project. An independent consultant can provide an unbiased professional opinion for design and installation choices without being swayed by personal or corporate financial gain. While contractors may be able to provide options to consider, they may not have the same legal, professional, or regulatory responsibility and may not be familiar with the current building code or engineering considerations required to ensure a safe finished product. Engaging a manufacturer's representative or other entity with a financial interest in the products they sell can create a conflict of interest (or at least the appearance of one) and can make it difficult to truly work in the best interest of the owner.

An independent consultant can prepare reroof design documents to conform to the requirements of the building code and create a basis for establishing equivalencies for all contractors bidding the project. The independent consultant can include products provided by multiple manufacturers for the contractors to consider in preparing their bid. When all contractors are providing estimates based on the same specified criteria, determining which bid provides the best value for the owner is simplified.

When a Registered Roof Consultant or design professional is involved, he or she can help navigate the potential options and solutions and can work with building owners to provide impartial, unbiased, customized professional advice with practical options for reroofing and/or repairs. In the authors' experience, the existing conditions are frequently not evaluated adequately by contractors or manufacturers to determine the appropriate reroofing solution for the project.

TYPICAL PLAYERS IN A ROOFING PROJECT



Registered Roof Observer

Verified professionals who have demonstrated a high level of technical knowledge in roofing observation and quality assurance.

RROs play a critical role in ensuring that roof installations are completed in accordance with project specifications, design intent, and industry standards.



Registered Roof Consultant

Trusted technical experts guiding building owners, architects, and contractors through the design, investigation, and management of roof systems with confidence and integrity.

RRCs bring proven expertise and a deep understanding of roofing materials performance, design standards, and best practices across the roofing industry.

Owner: The person or entity that owns the property to which the work is being performed.

Architect, Engineer, or Consultant: The entity that designs the new roof system. They also administer the contract for construction. They serve as a representative for the owner, but not as an agent for the owner. The Architect, Engineer, or Consultant typically contracts with the owner separately to provide architectural, engineering, or consulting services, and usually is the one that has developed the contract documents.

Contractor: The person or entity identified to perform the work in accordance with the contract documents. The contractor shall supervise and direct the work. The contractor is responsible and has control over construction means, methods, techniques, sequences, and procedures and for coordinating all portions of the work.

Manufacturer: The entity that produces the roofing materials and sells their products generally to the roofing contractor or distribution company. The manufacturers can provide standard details and assist with assembly recommendations, but they are often not tailored to the specific building conditions. They also provide a warranty for their products.

Consultant: The consultant can also serve to support any one of these prime parties above, or in some cases they can be one of the prime parties, for example when the consultant is serving as the design professional. They can also be retained by the contractor, Insurance Carrier, Lender, Developer, or other interest. In these cases, there would often be another Architect or Engineer that is retained by the owner that would be the design professional on the project.

THE ROOF DESIGN

The 2024 *International Building Code* (IBC), and many of the earlier IBC codes in Section 107 define “Construction Documents”. In order to obtain a building permit, construction documents need to be developed and prepared by a “registered design professional.” Section 107.2 describes what should be included within construction documents. Section 107.3.4 also describes additional duties of the design professional in responsible charge. Chapter 2 of the IBC defines the registered design professional as an individual who is registered or licensed to practice their respective design profession as defined by the statutory requirements of the professional registration laws of the state or jurisdiction in which the project is to be constructed.

In a traditional design-bid-build new construction project, Architects, Engineers, and other professional disciplines, retained by the owner, plan out the new building and ensure compliance with the building code. The owner hires the general contractor. The general contractor hires subcontractors. Subcontractors purchase products from manufacturers and install them. Even if not in a traditional design-bid-build scenario, if there is a construction manager (CM) or it is a design-build arrangement, these entities are involved, and the process is similar.

On existing buildings, the design process is different. The building code and various jurisdictions may classify roofing replacement work differently. The model codes have various provisions, with Section 1512 delegated to reroofing. Section 1512.1 states that roof replacement or re-cover shall comply with provisions of Chapter 15. The code also clearly states in Section 1501.1 that Chapter 15 governs the

“design,” materials, construction, and quality of the roof assembly. However, for reroofing there are some exceptions and specific requirements for reroofing projects that a qualified roof designer will be required to evaluate. These include the following:

Wet insulation – The building code requires that all of the wet materials be removed down to the structural deck during roof replacements. However, a roof re-cover allows for a second roof to be installed over the existing roof. There is an exception where the roof cannot be installed over a “water soaked” roof. There is some debate in the industry as to the definition of “water soaked,” but the commentary of the building codes provides some guidance by saying the materials need to dry completely so they do not trap moisture in the roofing layers beneath. As a result, identification and investigation of whether there is wet insulation within a roof assembly needs to be performed and evaluated prior to the roof re-cover (Figure 1).



Photo by Allysia C. Youngquist, AIA, IIBEC, NCARB

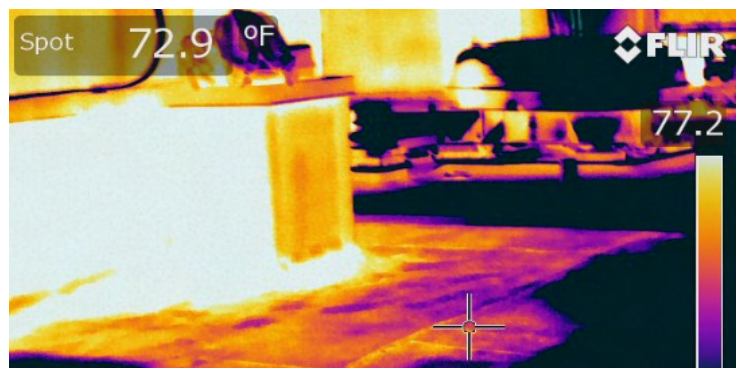


Figure 1. Infrared image of a roof area with entrapped water identified around a mechanical unit. Photo by Christopher W. Giffin, F-IIBEC, RRC, AIA, NCARB

Slope - The building codes require roofs to have a minimum of $\frac{1}{4}$ " per foot slope. Older codes provided an exception whereby they allowed for simply having "positive roof drainage" during a reroofing project. However, in the 2024 code cycle this exception was amended to also state that ponding instability of the structure needs to be evaluated per Sections 1608.3 and 1611.2 of the code if only "positive roof drainage" is provided. To avoid complicated engineering analysis on existing structures to evaluate ponding instability, adding the $\frac{1}{4}$ " per foot slope to the roof assembly is an option. However, if this choice is selected the designer needs to consider the impact of adding additional tapered insulation to the roof assembly because existing parapet walls, roof edges, penthouse doors, or other rooftop equipment will need to be modified if they are not of sufficient height above the elevation of the new roof membrane.

Overflow drainage - The older model building codes did not require secondary roof drainage in reroofing applications provided the roof had "positive roof drainage." Many older buildings, and some newer improperly designed buildings may not have had secondary drainage provisions, either overflow drains or scuppers (Figure 2). The code



Figure 2. View of significant ponding on roof due to clogged roof drains with no overflow provisions. Photo by Christopher W. Giffin, F-IIBEC, RRC, AIA, NCARB

allowed this hazardous condition to remain provided "positive roof drainage" occurred. In the 2024 IBC, the exception was amended to also require evaluating ponding instability of the structure per Sections 1608.3 and 1611.2 of the code if only "positive roof drainage" is to be provided. Many existing buildings may not be able to support the required ponding loads. As a result, either strengthening of the structure or the addition of secondary drainage provisions will be required. Regardless of the requirements of the building code, due to the potential for catastrophic damage and injury to the public, the authors recommend overflow drainage provisions be incorporated into a roofing system in every instance where water can accumulate on a roof in the event the primary drainage system becomes blocked (Figure 3).

Insulation - The *International Energy Conservation Code* (IECC) stipulates the amount of continuous roof insulation to be provided above the roof deck for commercial buildings. Insulation amounts have been slowly increasing over the years. Many existing buildings do not contain the minimum insulation requirement as stated in the IECC; however, the building code requires that roofs be modified to meet this requirement during roofing replacements. This may mean additional insulation



Figure 3. View of collapsed warehouse building roof due to excessive ponding water. Photo by Christopher W. Giffin, F-IIBEC, RRC, AIA, NCARB

is required to comply with the building code. Similar to the slope requirements, the increased thickness of the roof assembly and subsequent impact on the existing roof conditions needs to be adequately considered in the roof design.

Wind uplift resistance – The building code also provides criteria for roofs to withstand pressures associated with blowing winds. The wind uplift resistance and subsequent attachment requirements depend on several factors, including location, height, slope, parapet wall height, surrounding terrain, and other characteristics. Each of these factors must be considered to ensure the roofing system remains attached to the structure during design storm events (Figure 4). These requirements can also have a significant impact on the building's ability to be insured, depending on the insurance carrier.

Fire protection – Roof systems are required to satisfy two fire protection criteria: internal protection and external protection. Internal fire protection is intended to protect the building and its structural components from fire spreading upward into or through the roof assembly. Internal fire protection is typically expressed in hourly ratings (1-hr, 2-hr, etc.). External fire protection (classification) is typically a function of the roof covering or membrane and is intended to provide protection to the building from external fire exposure, such as embers, flames, or radiant heat from adjacent buildings, wildfires, or rooftop ignition sources, such as solar panels. External fire classification for roof coverings is usually expressed as Class A, B, or C .

Material selection – The seemingly endless options and possibilities for new roof systems include single-ply thermoplastic membranes, EPDM, sheet metal, multi-ply asphaltic membranes, liquid-applied

membranes, and others. However, not all roofing materials and systems are appropriate for every building's performance requirements. In fact, the wrong decision can lead to significant problems and increased costs over the long term. Experienced, independent roof consultants have an in-depth knowledge of the various available roof systems—and the strengths and weaknesses of each—and will work with building owners to understand their goals so that the best solution can be provided.

Potential leak sources - Apart from deficient roof conditions, several potential sources of water infiltration can exist that may result in water becoming entrapped in the roof assembly if they are not properly considered and addressed. These may include exterior walls, mechanical equipment, copings and parapets, or nonfunctioning drains or scuppers. The roof replacement or re-cover options also need to address these conditions so the new roof system is not compromised by an undiagnosed condition

Other elements to consider – Lightning protection systems, fire-protection systems, plumbing issues, specialized rooftop equipment, solar arrays, safety issues, facade access anchors and tie-backs, rooftop access, and structural issues with the roof deck are all elements that a consultant or design professional evaluates during a reroofing design.



*Figure 4. View of roof damage resulting from insufficient wind uplift resistance.
Photo by REI Engineers Inc.*

THE ROOF CONSTRUCTION

Depending on where the building is located, some municipalities classify reroofing as a repair and do not specifically require a roofing permit for construction, or the permits are prepared by a contractor. In these instances, there are generally no construction documents or they are vague with minimal information, and a proper design may not be performed. If a design professional is not engaged, and an owner contracts with a contractor or manufacturer for the roof replacement, the owner needs to consider: Who is the designer? Does that person have the requisite education, training, credentials, licenses, and insurance to practice as a design professional? Without the inclusion of a roof consultant or design professional on the project, the answer to this question is most likely, no.

The *International Building Code* addresses provisions that govern the design, guidelines for materials, and construction for roof assemblies and rooftop structures. Experienced design professionals or roof consultants can be engaged to provide unbiased professional opinions on your roofing replacement or repair project. They can help evaluate the existing conditions and propose a suitable and cost-effective roof design that will conform to the building code and provide years of service once installed. During the construction process the design professional can also ensure that the work is being properly performed, ensure that the proper materials are being used, and address concealed or unanticipated conditions that often develop during construction. Too often it is how these unanticipated conditions are resolved that can make or break the success of the entire roofing system.



CONCLUSIONS

When a design professional is not engaged during the reroofing process, the code requirements discussed above are often overlooked, not understood, or not considered. Without a clear and concise set of specifications to outline the requirements of the project, determining equivalency between multiple bids is difficult, and many owners resort to simply selecting the lowest bid with no regard to the difference in approaches considered by the bidders. In the long run, not considering these fundamental design considerations in a reroofing project can result in more money spent by owners on inferior roofing systems, increased heating and cooling costs, water leakage issues, and potentially hazardous conditions to interior occupants and the public. Relying solely on contractors or manufacturers to be the designers of the roof during reroofing projects can increase the risk that building owners incur and potentially decrease the overall performance of the roof assembly and the building it is supposed to protect.

If a design professional is needed, the International Institute of Building Enclosure Consultants (IIBEC) is a professional association dedicated to the advancement of the building enclosure. IIBEC provides education and registration programs for Registered Roof Consultants and Registered Roof Observers, in addition to other enclosure registrations and certifications.

For more information about connecting with an IIBEC Registered Roof Consultant or Registered Roof Observer in your area, contact IIBEC at www.iibec.org or 800-828-1902.

The International Institute of Building Enclosure Consultants (IIBEC) is a global association of professionals who specialize in roofing, waterproofing, and exterior wall consulting. From air barriers to cedar shakes and parking garages, IIBEC members bring expertise to every type of building enclosure issue. IIBEC credentials represent the pinnacle of building enclosure consulting.

www.iibec.org

Founded in 1983 as the Roof Consultants Institute, the organization rebranded in 2019 to reflect its broader scope. Today, IIBEC has over 3,900 members worldwide, offering impartial design, repair planning, quality assurance, legal testimony, and other building enclosure services—all grounded in a strict code of ethics that prohibits affiliation with specific products or manufacturers.



**Find an IIBEC
Consultant**

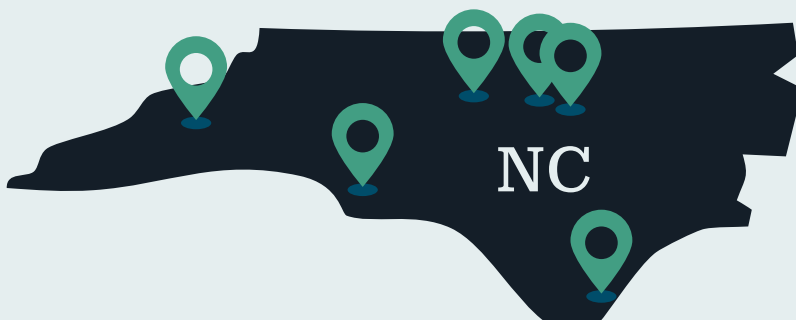


Scan to learn more about our on-going work across the State.



MCADAMS

A full-service planning, design and engineering firm bringing thoughtfulness to every detail in advancing our clients toward their vision and improving our communities.



Our North Carolina Locations

- | Raleigh (HQ)
- | Asheville
- | Charlotte
- | Durham
- | Wilmington
- | Winston-Salem

Advisory Services | Civil Engineering | Construction Administration | Funding Services | Geomatics | Land Planning + Entitlement | Landscape Architecture | Stormwater | Stream + Wetland Design | Transportation Urban Planning + Design | Visualization | Water + Wastewater

YP SPLASH

Submitted by APWA-NC Young Professionals (YP) Group

Who We Are

The Young Professionals (YP) group of the American Public Works Association – North Carolina Chapter (APWA-NC) is a vibrant network of emerging leaders dedicated to strengthening our communities and the public works industry across the state. Whether you're new to North Carolina, just starting your career in public works, or already building your professional path, our YPs are here to help you connect, grow, and thrive.

Young professionals are truly the lifeblood of APWA-NC. With a strong history of developing rising leaders, our Chapter is committed to supporting young, emerging, and transitioning professionals by fostering meaningful relationships and leadership opportunities statewide.

What We Do

Throughout the year, the YPs host a wide range of engaging events across North Carolina. From social gatherings like white water rafting trips, brewery meetups, and baseball games, to hands-on service events such as kayak clean-ups and food drives, there's something for everyone.

We also prioritize professional development. Our one-year mentorship program pairs young professionals with experienced leaders in APWA-NC, creating mutually beneficial relationships that encourage skill-building, knowledge-sharing, and lasting connections.

The YP Committee supports APWA-NC's mission by promoting:

- Career guidance and leadership development
- Networking and fellowship opportunities
- Volunteer and community service events
- Training and professional resources
- Regional involvement and mentorship at all levels

Together, we're building a strong future for public works in North Carolina.

How to Get Involved

Getting involved is easy—and we'd love to have you join us! The YPs hold monthly meetings to coordinate events, share announcements, and stay connected throughout the year.

To learn more or get started, reach out to:

- **Brie Saur:** saur@mcadamsco.com
- **Marissa Houston:** mhouston@moorevillenc.gov

You can also stay up to date by visiting the "News" section of the APWA-NC website or checking out the bimonthly APWA-NC newsletter.

Thank You to Our YP Partners

Mountain Range:



Coastline:





Brie Saur

Tell us about your career journey so far. What did you study, how did you get started, and what experiences led you to your current role?

When I started in Engineering at NC State, I wasn't quite sure which discipline I wanted to study and make a career with. When a friend told me about Biological Engineering being a collaboration between the environment and engineering, I felt that was the best way to incorporate my passions with work. So, I studied Biological Engineering at NC State which led me to an internship opportunity with McAdams. As an intern, I was designing Stormwater Control Measures, providing nutrient offset calculations, and running peak flow analysis. This felt like the best practical way to use my degree and turned into something I really enjoyed. Since my internship, I've stayed on at McAdams and have transitioned to our Capital

Improvement Projects team where I solely serve public clients and local municipalities. I've been fortunate that this transition was one that I didn't know I needed or wanted but I can't see myself doing anything different now.

What is your current role, and what types of projects are you working on? What aspects of your work are you most passionate about?

My current role is a Project Engineer where I straddle the line between technical responsibilities and client coordination and communication. The majority of my work right now is with city-wide stormwater master plans, localized flooding design solutions, and asset inventory assessments. This melting pot of projects exposes me to everything from field work and surveying, to high level watershed modeling, to developing construction drawings for bid. Lately I have been most passionate about interacting with the homeowners or business owners of the projects that we're working on. By listening to their problems, I'm able to create tailored solutions to best fit their needs and deliver not only a solid engineering project, but a better quality of life for someone and that is what keeps me coming to the office.

What are your professional goals for the next few years?

A professional goal of mine is to continue building my leadership skills to prepare myself to transition to a Project Management role. By being involved in both the NC APWA Young Professionals committee as well as APWA Emerging Leaders Academy, I've learned a great deal about myself and how to hone in my leadership abilities to best serve the people around me.

How did you get involved with APWA, and what has your experience been like so far? What would you say to other young professionals considering getting involved?

I was introduced to APWA a few years ago when my boss sent me to the State Chapter Conference in Durham. I didn't know many people going into it, and it was my first conference I attended so I was quite nervous for it. However, at that conference I was introduced to so many kind people which has snowballed into my involvement now. I think the best thing I did as a young professional then was allow myself to be open to opportunities that presented themselves and taking them when they aligned with my goals for career growth and network building. I said yes to almost everything and it gave me multiple perspectives into the group as well as created a strong foundation of APWA members who I get to see now and catch up with at conferences and social events.

What should we know about you outside of work?

I recently moved from Raleigh to Asheville and have been absolutely loving all the nature that I'm surrounded by! On the weekends you'll find me taking a cruise on the Blue Ridge Parkway with the windows down or hiking to a nearby waterfall. When I'm not in the woods, I'm usually playing volleyball or reading a book on my couch with my cat, Mr. Chess.



Marissa Houston

Tell us about your career journey so far. What did you study, how did you get started, and what experiences led you to your current role?

I have BS & MS in Environmental & Natural Resource Economics from West Virginia University. My first hands-on experience was an internship performing stormwater outfall inspections in my hometown for Cuyahoga County, OH. At the time I didn't realize it, but that experience planted the seed for what would eventually become a passion for stormwater. In grad school I worked with the USDA-NRCS, where I assisted in implementation of conservation programs and emergency watershed protection, where I developed a strong appreciation for public service and the impact it can have on communities. After grad school I moved to Asheville, NC to work as an Environmental Specialist for a commercial

solar developer. While it was a valuable experience, it ultimately reinforced that I wanted to be in public service where I could work more directly with communities. I joined the Town of Mooresville as a Stormwater Program Specialist in 2020 and quickly rediscovered my interest in stormwater from a new perspective. Since then I've grown with the organization, first becoming Stormwater Program Manager and most recently Deputy Water Resources Director.

What is your current role, and what types of projects are you working on? What aspects of your work are you most passionate about?

I've been in the Deputy Water Resources Director role for about six months. I still oversee the stormwater program but am also gaining experience with our water and sewer infrastructure and plant operations. Right now I'm managing several projects, including a Stormwater Master Plan for the Reeds Creek/Lake Norman Basin, improvements to our GIS service request/work order systems, and multiple capital improvement projects. While stormwater is still my passion, expanding into other areas of water resources has been an exciting challenge.

What are your professional goals for the next few years?

In 2025 I earned my Certified Stormwater Manager certification through APWA and completed the Town's Emerging Leaders program in 2024. Over the next few years, my focus is on continuing to grow as a leader in my new role. I also plan to take additional courses through the UNC School of Government to further develop my leadership, management, and public administration skills. My goal is to continue building the knowledge and perspective needed to effectively support my team.

How did you get involved with APWA, and what has your experience been like so far? What would you say to other young professionals considering getting involved?

I first joined APWA through our organization's membership in 2019 and attended the annual Stormwater Conference and various webinars. In 2023 I discovered the Young Professionals group at a conference and started attending their monthly meetings. Since then, I've taken on several roles within the committee. For anyone early in their career, I would strongly encourage getting involved. It's a great opportunity to build relationships, gain new perspectives, and find a network of people who are navigating many of the same experiences in public service.

What should we know about you outside of work?

I have two young daughters (1 and 3), so life is wonderfully chaotic. My husband and I have a large garden, and we spend most of our summers outside tending to it. We love spending time outdoors in general and exploring new places whenever we can. We also have a 10-year-old dalmatian, Chet, who despite his age is still an absolute menace. When I get a little time to myself, I enjoy going for a run or relaxing with a good historical fiction book.

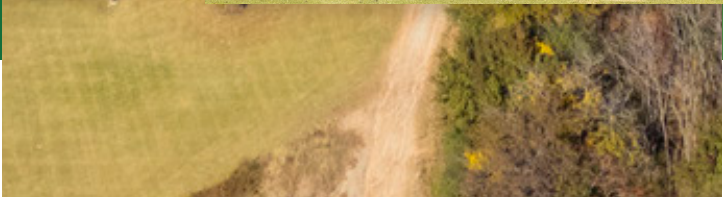


REAL IMPACT

YOUR COMMUNITY. OUR COMMITMENT.

We're local enough to care about every client and big enough to bring innovation along for the ride. We approach every client, location, and project as unique and let collaboration lead us to the right solution.

We promise every client two things: we'll work hard for you, and we'll do a good job. At the end of the day, we're **Real People** offering **Real Solutions**.



Oval Plaza, North Carolina State University
Raleigh, North Carolina



Real People. Real Solutions.

bolton-menk.com

CONGRATULATIONS

Celebrating Our 2026 APWA-NC Scholarship Winners!

The APWA-NC Chapter is proud to announce and celebrate our 2026 Scholarship Award recipients, three outstanding women who exemplify the future of public works leadership in North Carolina. This year's recipients represent dedication, academic excellence, community commitment, and an inspiring passion for public service.

2026 Student Scholarship Winners

- **Anna Babski**, *NC State University*
- **Charlize Ganse**, *NC State University*

We are thrilled to recognize Anna and Charlize, both students at NC State University.

These two exceptional young women stood out through their academic achievement, service-minded leadership, and their demonstrated interest in fields that support the mission of public works. Their talent and enthusiasm reflect the bright future of our profession, and we are proud to support them as they continue their studies and prepare to enter careers that strengthen North Carolina's communities.

2026 Public Works Professional Scholarship Winner

- **Lauren Hinely**, *City of Gastonia*

Our Public Works Professional Scholarship has been awarded to Lauren Hinely from the City of Gastonia, a long-time APWA-NC member and an active contributor to our Solid Waste Division.

Lauren has been a recognizable and respected presence within APWA-NC for many years. Her commitment to professional development and her dedication to improving public works operations within her community set a high standard for those in the field. As she continues her education, we are honored to support her journey and look forward to the leadership she will continue to bring to the profession.

Why These Scholarships Matter

Each year, APWA-NC supports students and professionals who advance public works through education, innovation, and service. These scholarships reinforce our commitment to developing future leaders who will design, manage, and maintain the infrastructure that keeps North Carolina thriving.

Join Us in Celebrating Our 2026 Honorees!

Please help us congratulate Anna, Charlize, and Lauren on this well-earned recognition. Their achievements inspire our membership and exemplify the mission of APWA-NC.

We look forward to seeing all the incredible things they will accomplish in the years ahead!

Congratulations to the following people for receiving their Certified Public Works Professional - Management (CPWP-M) Credential!

- **Bradley Beeson**, *Town of Kernersville*
- **Gregory Ray**, *Town of Kernersville*

The Certified Public Works Professional-Management credential recognizes individuals in the public works field who have the knowledge and experience to manage organizations in a public works department.

The credential is for public works managers, superintendents, and supervisors ready for management positions.

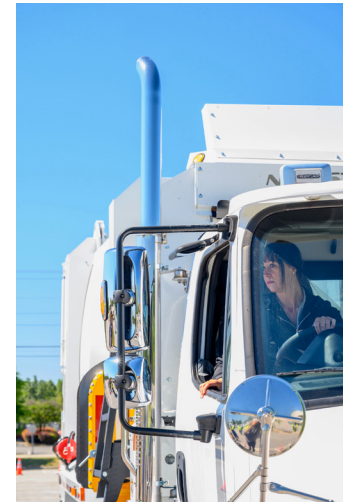
[Learn More](#)

CONGRATULATIONS

Congratulations to the NC Rodeo Winners!

2026 NC Rodeo Winners:

- **Mini Excavator:** Curtis Crisco, *City of High Point*
- **Backhoe:** Jorge Paullada, *City of Wilson*
- **Automated Garbage Truck:** Kellan Bowman, *City of Hickory*
- **Skid Steer:** Jesse Cardwell, *City of High Point*
- **Knuckle Boom:** Keith Kimball, *City of Raleigh*
- **Articulated Mower:** Jesse Cardwell, *City of High Point*
- **Snow Plow:** Josh McLaurin, *City of Mooresville*



WELCOME NEW MEMBERS!

Welcome to these new members who took advantage of the chapter's first-time member's rate offered by APWA national when registering for the APWA-NC Facilities and Grounds Division Conference. The membership committee encourages our Chapter members to reach out to these new "family members" with a great big welcome.

NAME	TITLE	ORGANIZATION/COMPANY
Tim Blanks	Industrial Process Designer	Teeple Architects
Sara Caliendo	Energy Manager	Town of Cary
Andrew Chen	Stormwater Engineering Intern	Town of Apex
Thomas Clark		City of Durham
Ron Clemmer	Senior Water/Wastewater Engineer	LaBella Associates PC
James Coley	Director - Planning & Community Development	Town of Mooresville
William Cowan	Business Development Representative	WithersRavenel
Darrius Cozart	Street Maintenance Field Crew Supervisor	Town of Apex
Peter Erlenbach	Sr. Solution Engineer	ESRI
Dan Feltman	Director of Public Sector	P3 Civil
Matthew Fogleman	Director of Strategic Initiatives	ECS: Engineering Consulting Services
Jacob Goode	Crewleader	Town of Hillsborough
Felix Goolsby		Town of Kernersville
Rusty Hampton	Equipment Operator	Town of Kernersville
Jason Hill	Public Works Director	Town of Rural Hall
Christopher Huckaby	Public Works Superintendent	Town of North Topsail Beach
David Key	Business Unit Executive, Water Resources	ESP Associates, Inc.
Mike Kowalski	Streets Maintenance Supervisor	Town of Morrisville
Ashley Lavender	Waste Reduction Manager	City of Asheville
Kevin Lowery	Public Works Equipment Mechanic 2	City of Laurinburg
David Lyon	Director, Equipment Finance	TEL
Tumi Mabaso	Civil Engineer	LaBella Associates PC
Dean McKenzie	Operations Market Leader Principal	C Design, Inc.
Zachary Medlin	Fleet Services Technician	Town of Apex
John Miller	Regional Manager, Southeast Region	Auctions International Inc
Jordan Nelson	Funding and Asset Management Assistant Project Manager	Withers Ravenel
Tyler Phillips	Territory Manager NC & Eastern SC	Eastcom Associates
Jennifer Porter	Vice President	Raftelis
Deanna Rosario	Stormwater Administrator/Water Resources Manager	Town of Spring Lake
Derek Slocum	Business Development Representative	Withers Ravenel
Gregory Sponseller	Facilities Manager	Town of Holly Springs
Brian Swogger	Manufactures Rep	Schaeffer's Specialized Lubricants
Rachel Toker	Sustainability and Resiliency Division Manager	City of Durham
Juan Villegas	Engineering Project Manager	City of Charlotte
Robert Willard	Fleet Maintenance Supervisor	Town of Kernersville
Ashley Wimberly	Ass't Public Services Director	Town of Lillington
Eric Windless		City of Durham

CHAPTER CONTACTS

APWA-NC 2026 OFFICERS

<p><i>President</i> Forrest Jones City of Garner fjones@garnernc.gov</p>	<p><i>President-Elect</i> Steve Lander Pavement Navigators slander@pavementnavigators.com</p>	<p><i>Vice President</i> Rick Sanderson City of Charlotte rick.sanderson@charlottenc.gov</p>
<p><i>Chapter Administrator</i> Kate Davison ITRE NC LTAP apwancadmin@ncsu.edu</p>	<p><i>Secretary</i> Jacqueline Thompson Bolton & Menk, Inc. secretary@northcarolina.apwa.org</p>	<p><i>Treasurer</i> Christina Vanderzee City of High Point apwanctreasurer@outlook.com</p>
<p><i>Past President</i> Chip Vanderzee Summit Design and Engineering Services sammy.vanderzee@summitde.com</p>	<p><i>Director '25-'26</i> Caroline Kone, PE City of Hickory ckone@hickorync.gov</p>	<p><i>Director '25-'26</i> Kevin Rogers City of High Point kevin.rogers@highpointnc.gov</p>
<p><i>Director '25-'26</i> Dennis Stanley Town of Cary dennis.stanley@townofcary.org</p>	<p><i>Director '26-'27</i> Michelle Podeszwa McAdams podeszwa@mcadamsco.com</p>	<p><i>Director '26-'27</i> Taylor Keith TELICS taylorkeith@telics.com</p>
<p><i>Council of Chapters, Delegate</i> James Martin, PE NC State University/ITRE (retired) jbm@ncsu.edu</p>	<p><i>Council of Chapters, Alternate</i> Gary Smith City of Burlington gsmith@burlingtonnc.gov</p>	

APWA-NC 2026 DIVISION PRESIDENTS

<p><i>Equipment Services</i> Neal Hall Town of Garner nhall@garnernc.gov</p>	<p><i>Facilities and Grounds</i> Steve Gearren Village of Clemmons sgearren@clemmons.org</p>	<p><i>Leadership & Management</i> Andrew Parker Bohler Engineering aparker@bohlereng.com</p>
<p><i>Solid Waste</i> Griffin Hatchell City of Greensboro Field Ops griffin.hatchell@greensboro-nc.gov</p>	<p><i>Stormwater</i> Rob Hopper Resource Environmental Solutions rhopper@res.us</p>	<p><i>Streets</i> Steve Robbins Town of Huntersville srobbins@huntersville.org</p>

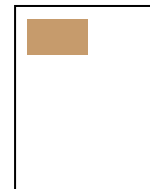
Advertise in the North Carolina Chapter News

As we look forward to 2026 APWA-NC encourages you to consider advertising with us in our quarterly digital newsletter. The support of our partners allows the Chapter to fulfill its mission of promoting professional excellence and public understanding through education, advocacy, and the exchange of knowledge.

By leveraging our subscriber list, you will be seen by over 1,200 industry professionals throughout the state.

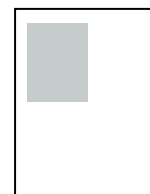
BRONZE \$500

- Full color business card ad in all 6 bi-monthly newsletters
- One (1) technical article submission per calendar year
- Logo & link to website included on Chapter Homepage & Newsletter Webpage
- Partner recognition at Annual Past Presidents' Dinner & Annual Meeting
- Partner recognition at registration tables at conferences



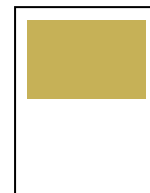
SILVER \$1,000

- All bronze benefits
- Upsize ad from business card to 1/4 page for all 6 bi-monthly newsletters
- Partner recognition at North Carolina Equipment Rodeo
- Partner recognition on PWX Equipment Rodeo T-Shirts



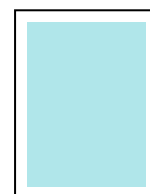
GOLD \$1,500

- All silver benefits
- Upsize ad from 1/4 page to 1/2 page for all 6 bi-monthly newsletters
- Additional technical article submission per year (2 per year)
- Sponsor a table at Annual Past Presidents' Dinner



PLATINUM \$2,000

- All gold benefits
- Upsize ad from 1/2 page to full page for all 6 bi-monthly newsletters
- Name & link to website included in weekly InfoNow emails
- Name & link to website included on monthly new member welcome emails
- Partner recognition at one (1) chapter event



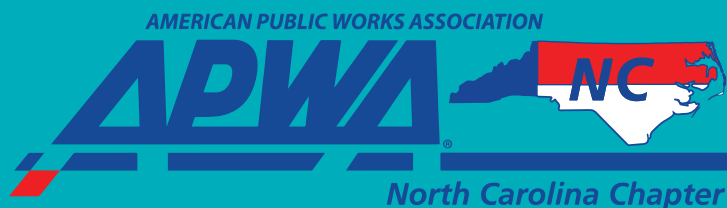
A LA CARTE OPTIONS

- Business Card Ad in 1 newsletter - \$50
- 1/4 Page ad in 1 newsletter - \$80
- 1/2 page ad in 1 newsletter - \$130
- Full page ad in 1 newsletter - \$200
- Sponsor a table at the Past President's Dinner - \$250

[Click Here
to Register
as a Partner!](#)

Contact Us:

Allison Wilson
awilson@espassociates.com
919-491-7733



OUR MISSION

Engage the public works community and citizens through support, education, advocacy and outreach by creating opportunities for training, accountability, networking and growth for the benefit of all.

northcarolina.apwa.org

